

# Diabetes Research & Wellness Foundation

## DRWF diabetes information leaflets New versions published

### Available titles:

- **What is diabetes?**
- **Exercise and diabetes**
- **Foot health and diabetes**
- **Healthy eating for diabetes**
- **Looking after gum health and diabetes**
- **Eye health and diabetes**
- **Diabetes management when you are ill**
- **Sexual health and diabetes for men**
- **Sexual health and diabetes for women**
- **Kidney and heart health**
- **Top tips for a healthy packed lunch** online only
- **Signs and symptoms of diabetes** online only

### Diabetes awareness accessories:

- **Diabetes Awareness Wristbands \***

### Quarterly newsletter:

- **Diabetes Wellness News**

Please contact us at [enquiries@drwf.org.uk](mailto:enquiries@drwf.org.uk), or by calling **023 9263 7808**, to request the items you would like and volume.

Provide name and address to send the resources to.

Your details will be added to the DRWF Healthcare Professional database and from time to time we may contact you with interesting news and offers.

Please confirm with details, your preferred method of contact: post, email, or telephone.

*Please advise us at any time if you do not wish to receive contact from DRWF by emailing: [enquiries@drwf.org.uk](mailto:enquiries@drwf.org.uk), or by writing to the following address: **DRWF, Building 1000, Langstone Park, Havant, Hampshire, PO9 1SA**. We will not share your data.*

We publish a series of professionally authored, PIF TICK-accredited information leaflets on diabetes and related health which are freely available as download, audio file or as hard copy upon request.

DRWF is happy to supply healthcare professionals with bulk orders of the above items **FREE OF CHARGE** (there is a charge for the items marked \*) and will pay the postage on orders of up to 12 of each leaflet. Above this quantity, please contact DRWF to make delivery arrangements.

**Email [enquiries@drwf.org.uk](mailto:enquiries@drwf.org.uk) or call 023 9263 7808 for more information.**

**Visit our website to view the full series of DRWF Diabetes Information Leaflets:  
[www.drwf.org.uk/understanding-diabetes/information-leaflets](http://www.drwf.org.uk/understanding-diabetes/information-leaflets)**

*"Staying well until a cure is found..."*

## RESOURCES PACK for healthcare professionals

### Waiting room order form



## Diabetes Research & Wellness Foundation

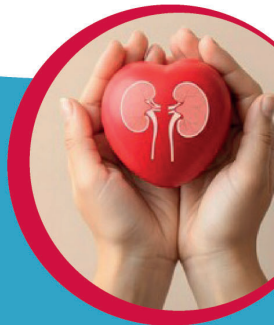
### Have you had your "double check"?

The two vital tests for  
kidney and heart health

*for people living with diabetes*

By:  
Janaka Karalliedde  
Clinical Professor of Diabetes  
King's College London

*Financial support has  
been provided as a  
grant from Pfizer*



*Staying well until a cure is found...*